



Williamsburg Areawide Study

Community Meeting # 2
August 17th, 2022



Agenda



- ▶ **Introductions**
- ▶ **Study Area & Objectives**
- ▶ **Data Collection & Existing Conditions**
- ▶ **Crash Data**
- ▶ **Cut-Through Traffic Patterns**
- ▶ **Network Operational Results**
- ▶ **Speed Study Results**
- ▶ **Study Timeline**



Introductions



Welcome and Opening Remarks



District 1 Commissioner
Nicole Wilson



Introductions



Orange County

Scott Nager – Transportation Planning Division, Project Manager

TMC, Project Consultant

Ayman Saidi – Consultant Project Manager

Other Orange County Staff and Consultant Staff



Study Area and Objectives



Study Area

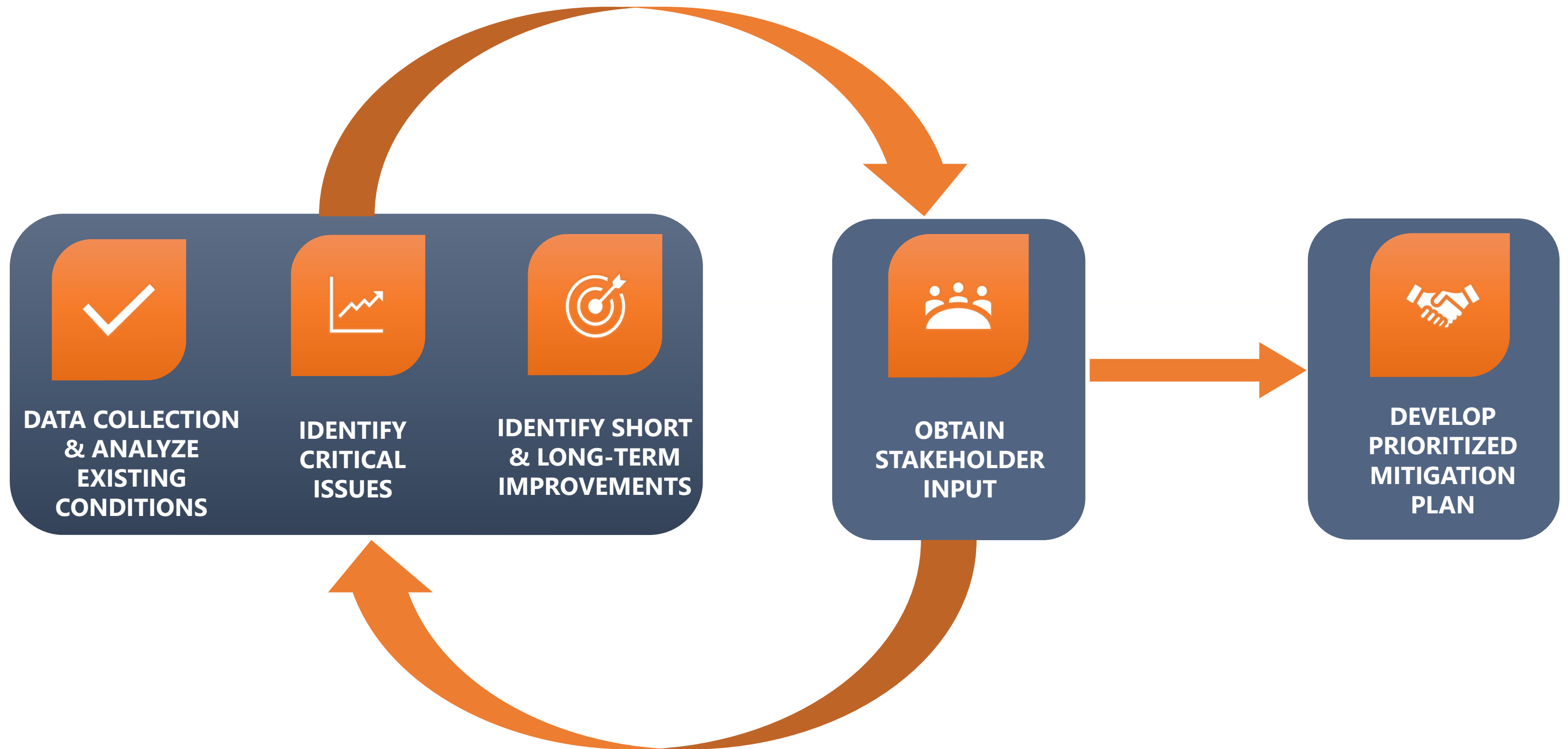
4 quadrants relative to Central Florida Parkway and Orangetown Boulevard intersection

Objectives

- Identify high crash locations/types
- Identify cut-through traffic patterns and volumes
- Identify operational deficiencies
- Identify speeding behaviors
- Identify short-term and long-term improvements for County implementation into the Capital Improvement Plan (CIP)
- Prioritize improvements



Study Approach

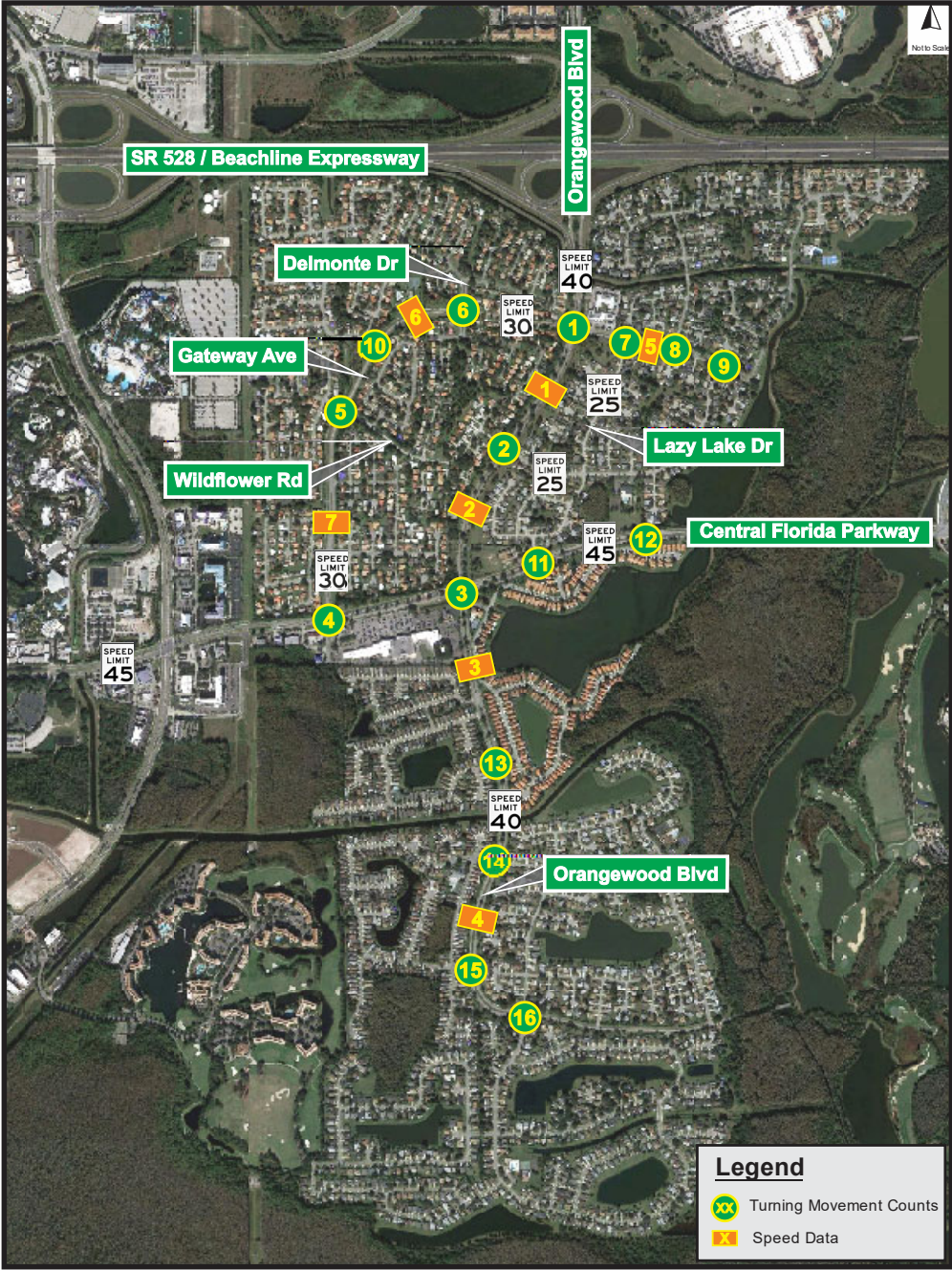




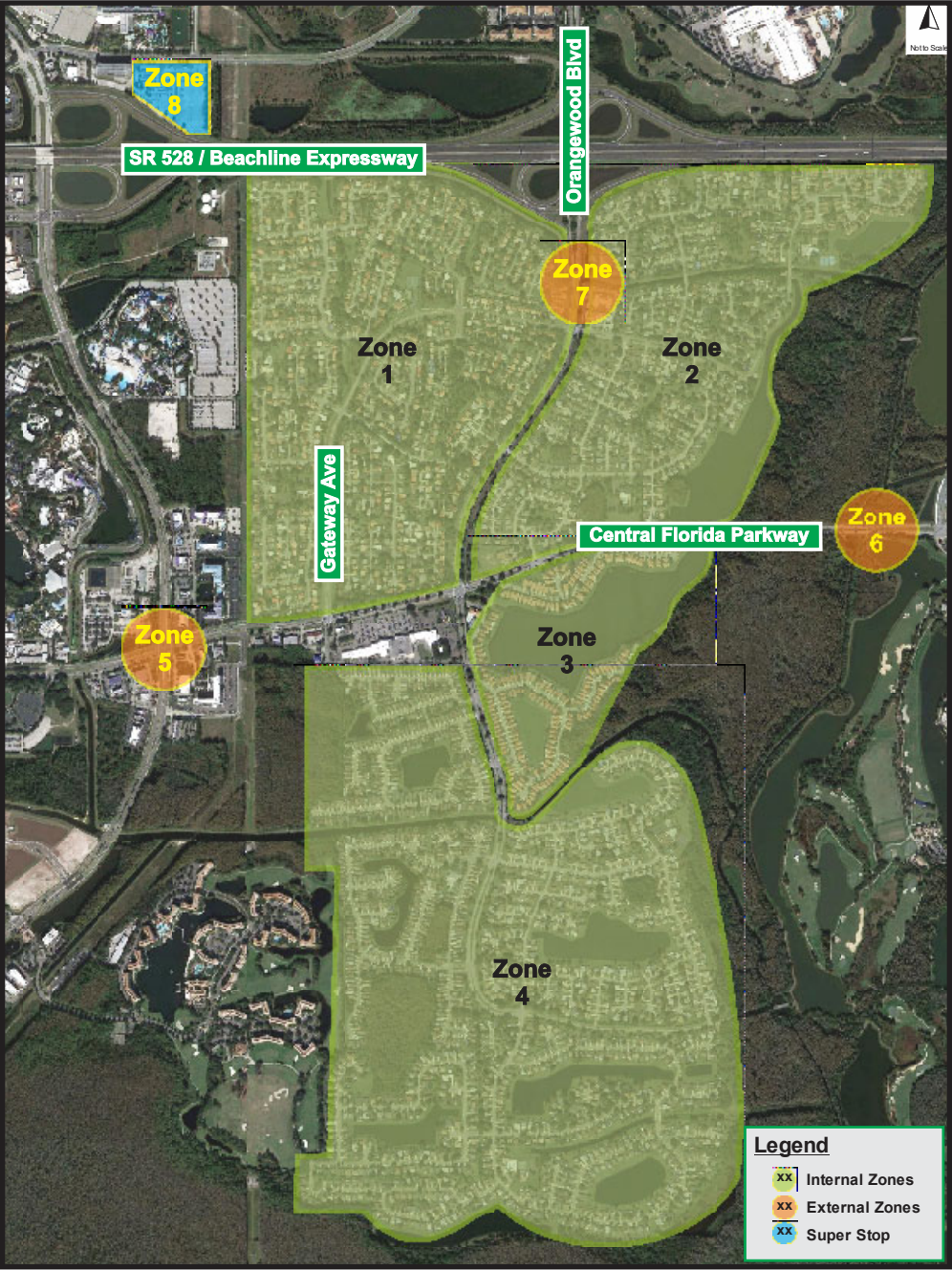
Data Collection



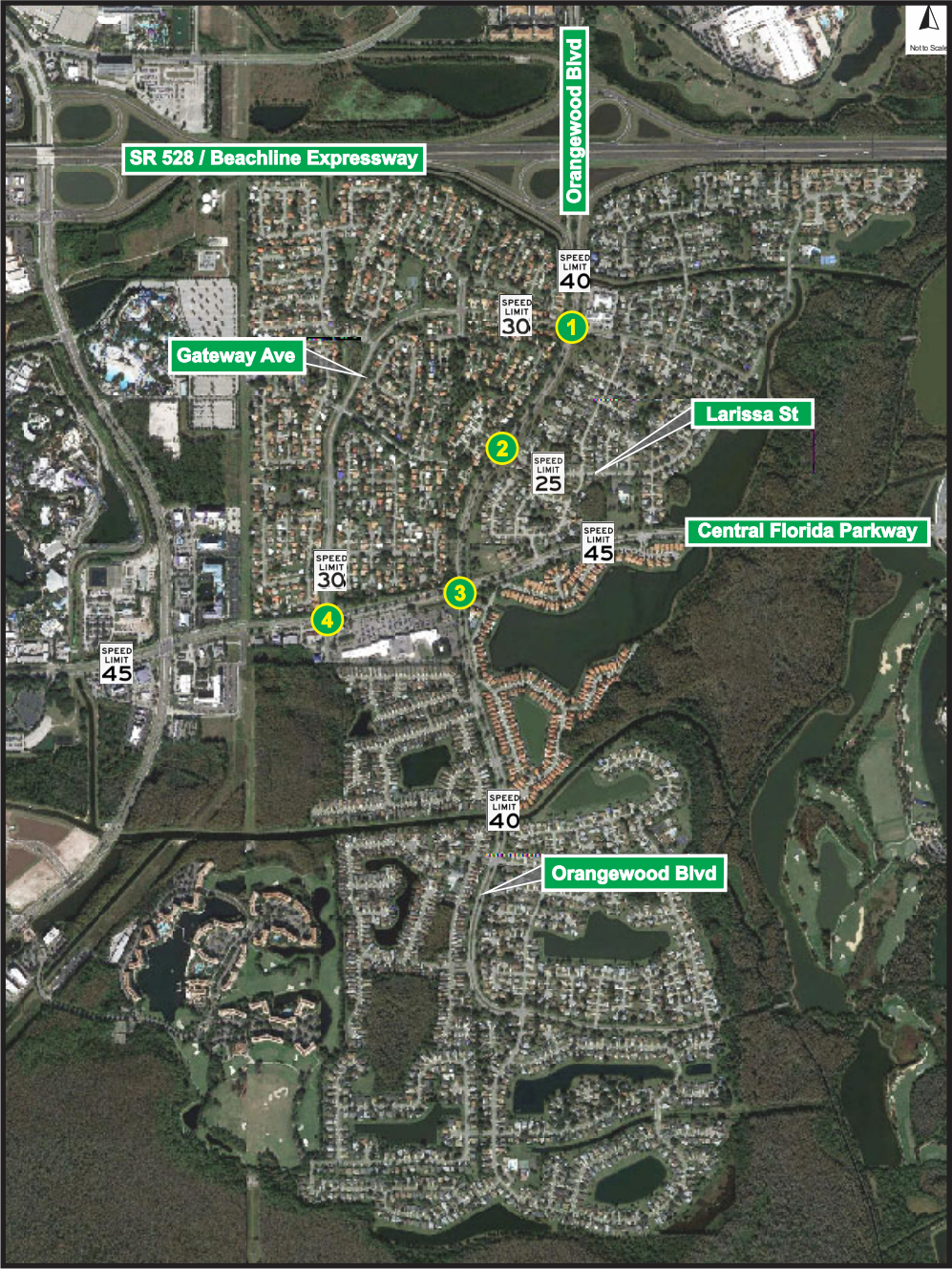
Intersections & Roadways Volumes/Speed



Origin & Destination Travel



Historical Crashes





Existing Conditions – ADA Compliance Issues



East crosswalk at
Orangewood Blvd. &
Gateway Ave. showing no
curb ramp in NE corner



South crosswalk at
Orangewood Blvd. &
Gateway Ave. showing no
connection to sidewalk



Sidewalk at Gateway Ave. &
Larissa St. with no sufficient
flat landing area



Existing Conditions – ADA Compliance Issues



Crosswalk at NE corner of Central Florida Pkwy. & Gateway Ave. with steep slope ending at signal cabinet



Damaged Crosswalk at SW corner of Central Florida Pkwy. & Gateway Ave. with Ped ramp connecting to one direction



Missing Detectible Warning Strip at SW corner of Central Florida Pkwy. & Oranewood Blvd.



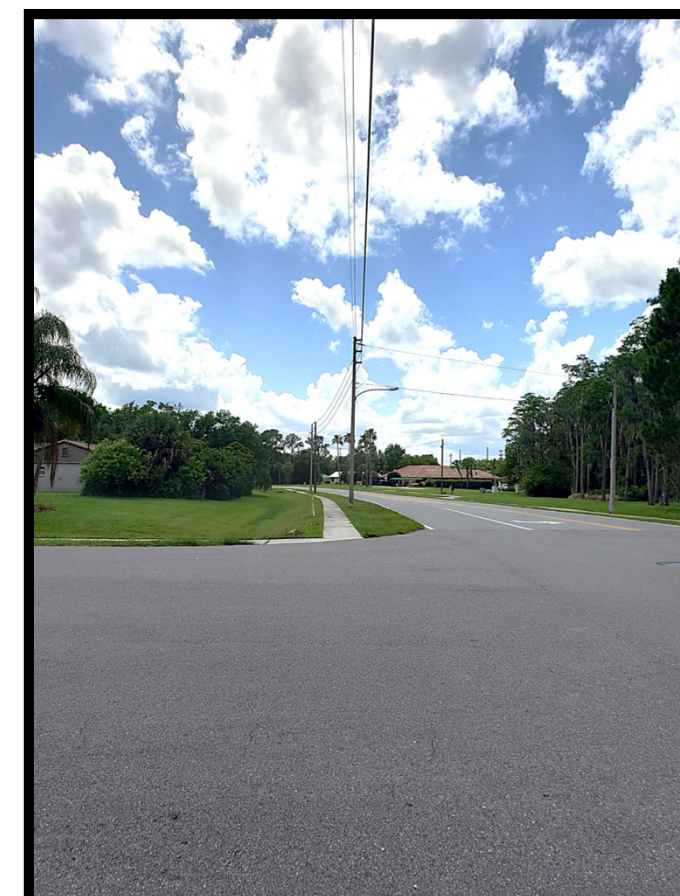
Existing Conditions – Sight Distance Issues



Obstructed Sight Distance Looking
Right at Gateway Avenue & Marco Polo
Drive



Poor Sight Distance Looking Left at
Orangewood Blvd & Deer Creek
Drive (EB)



Poor Sight Distance
Looking Left at
Gateway Avenue &
Delmonte Drive (NB)



Field Visit Findings – Drainage Issues



Flooding at Gateway Avenue & Marco Polo Drive with Clogged Ditch Bottom Inlet

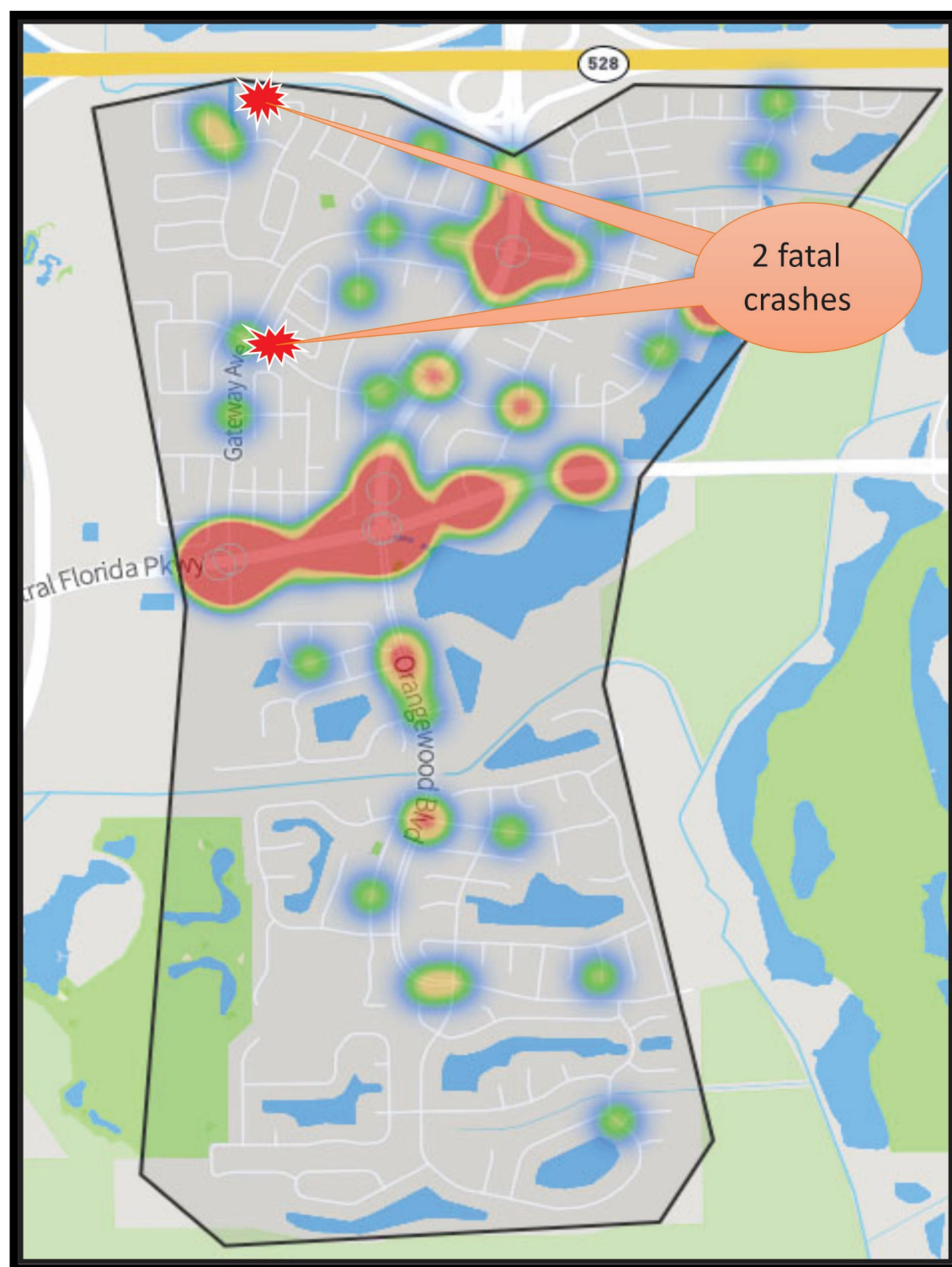


Gateway Avenue & Wildflower Road with Clogged Drainage Pipes





Crash Data



Recent 3 Years (2019 to 2021)

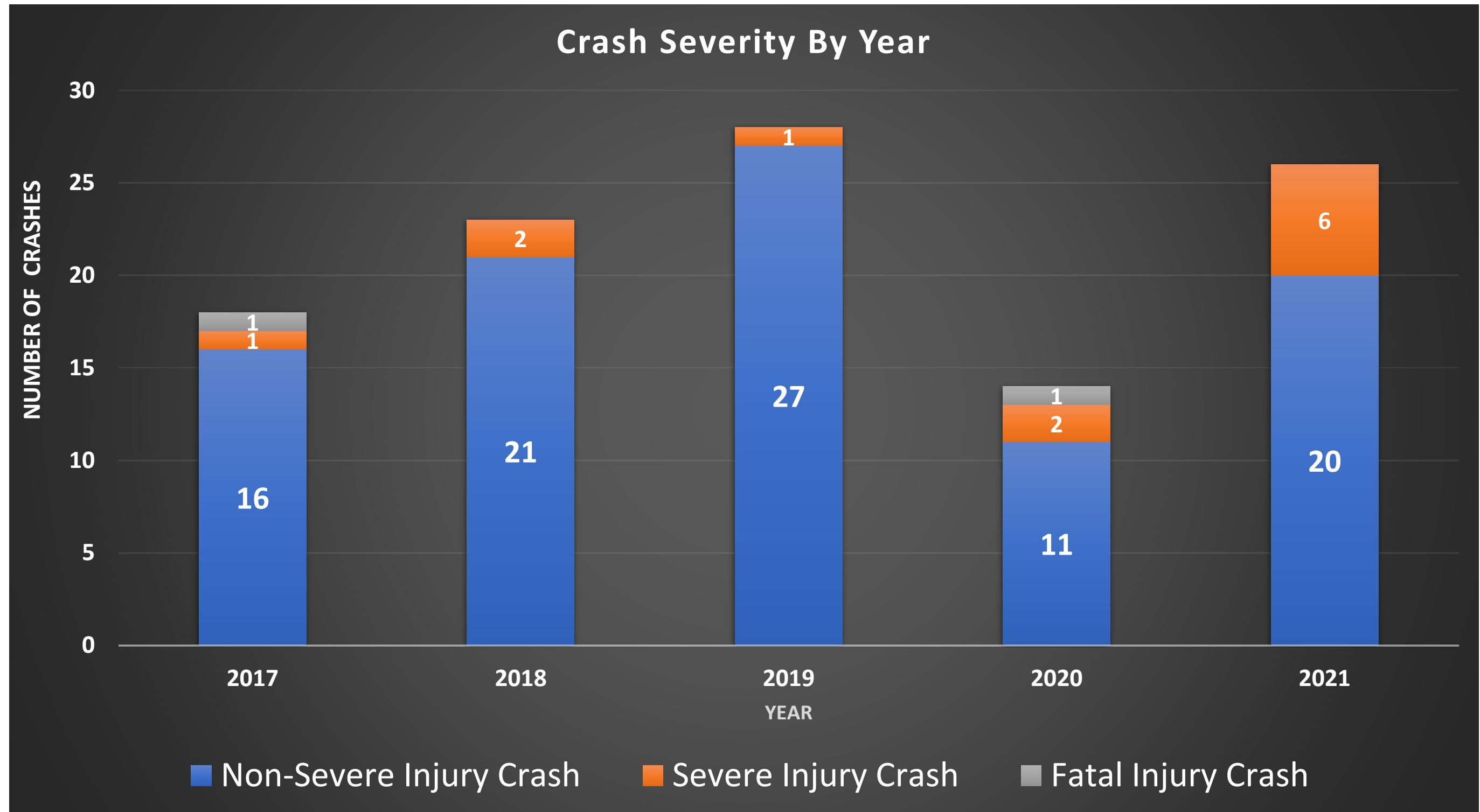
- 159 Total Crashes
- 1 Fatal Crash
- 9 Severe Injury Crashes

Recent 5 Years (2017 to 2021)

- 297 Total Crashes
- 2 Fatal Crashes
- 12 Severe Injury Crashes



Crash Data

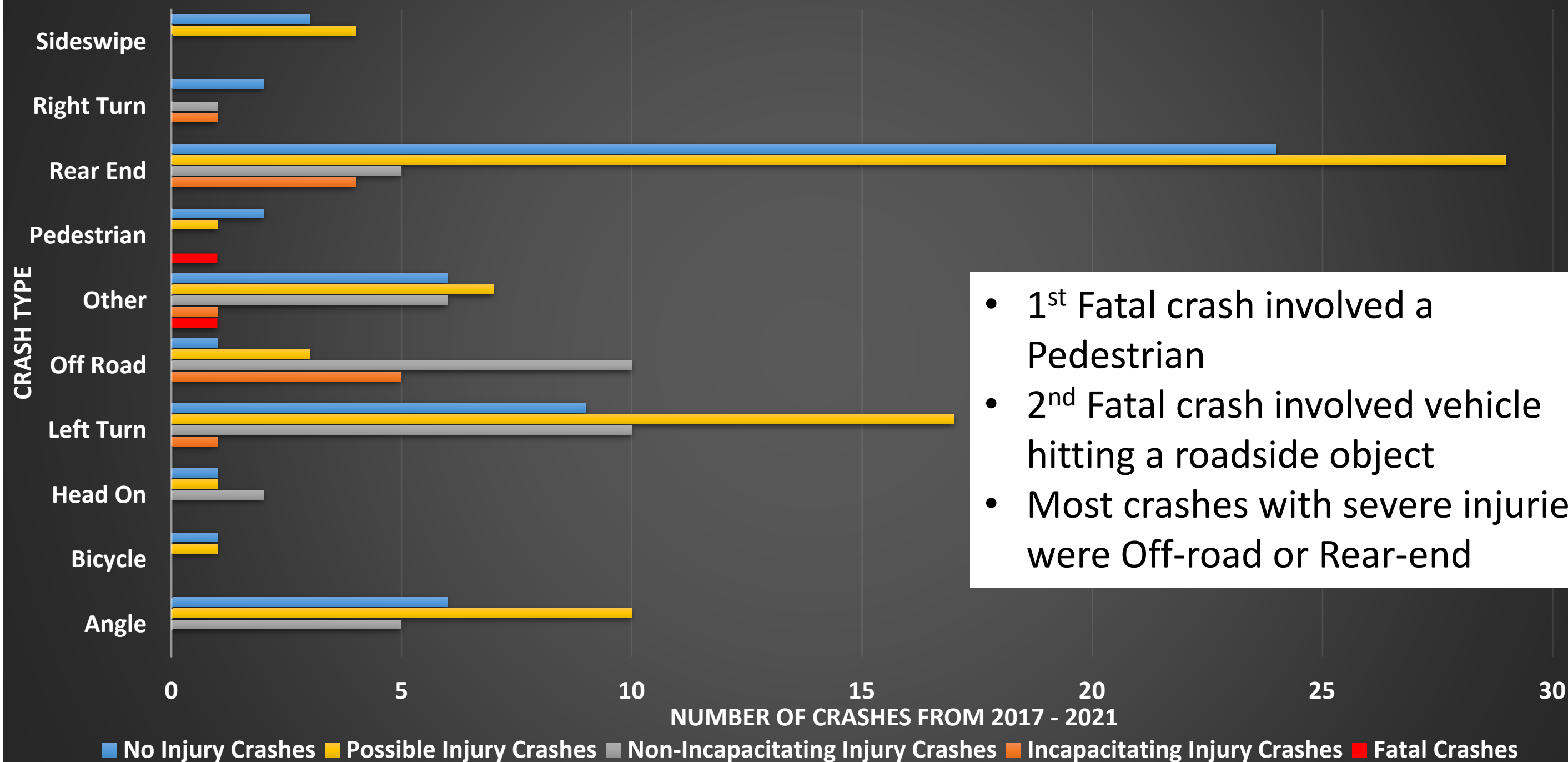




Crash Data



Crash Severity By Type

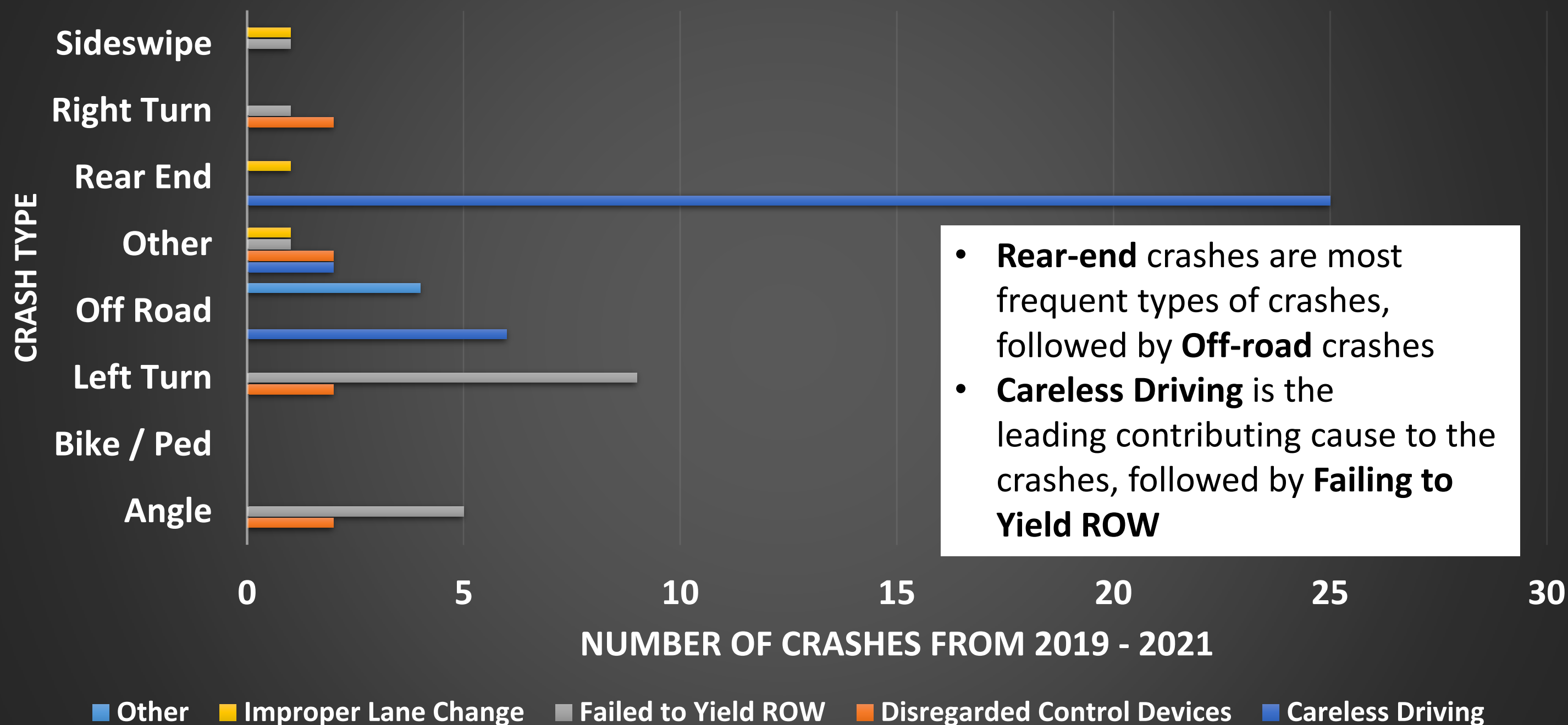




Historical Crash Data

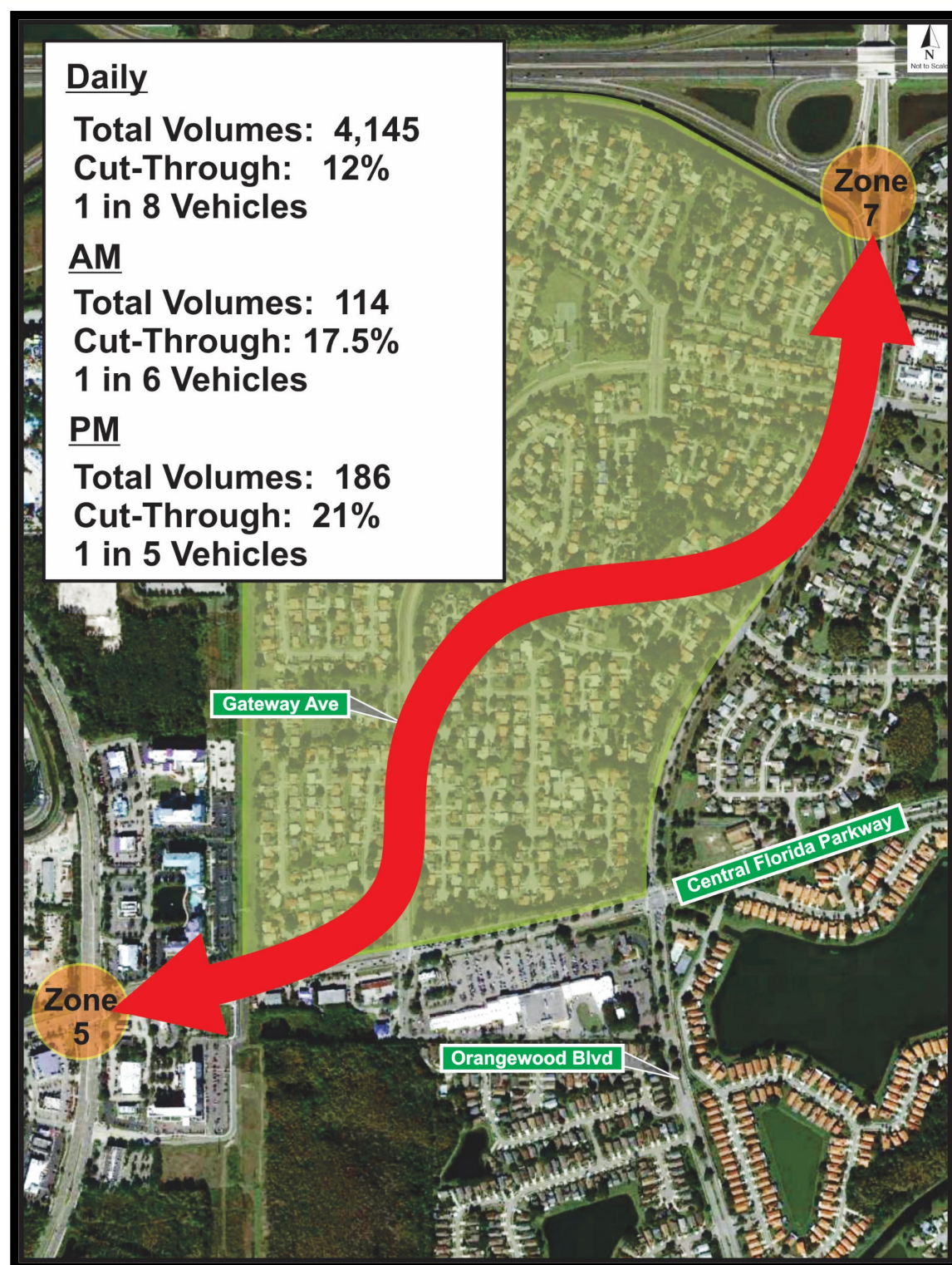


Crashes by Type & Contributing Cause





Cut-Through Traffic Patterns



O-D Pair (North & West)

Northwest quadrant experiences the highest cut-through

West to North

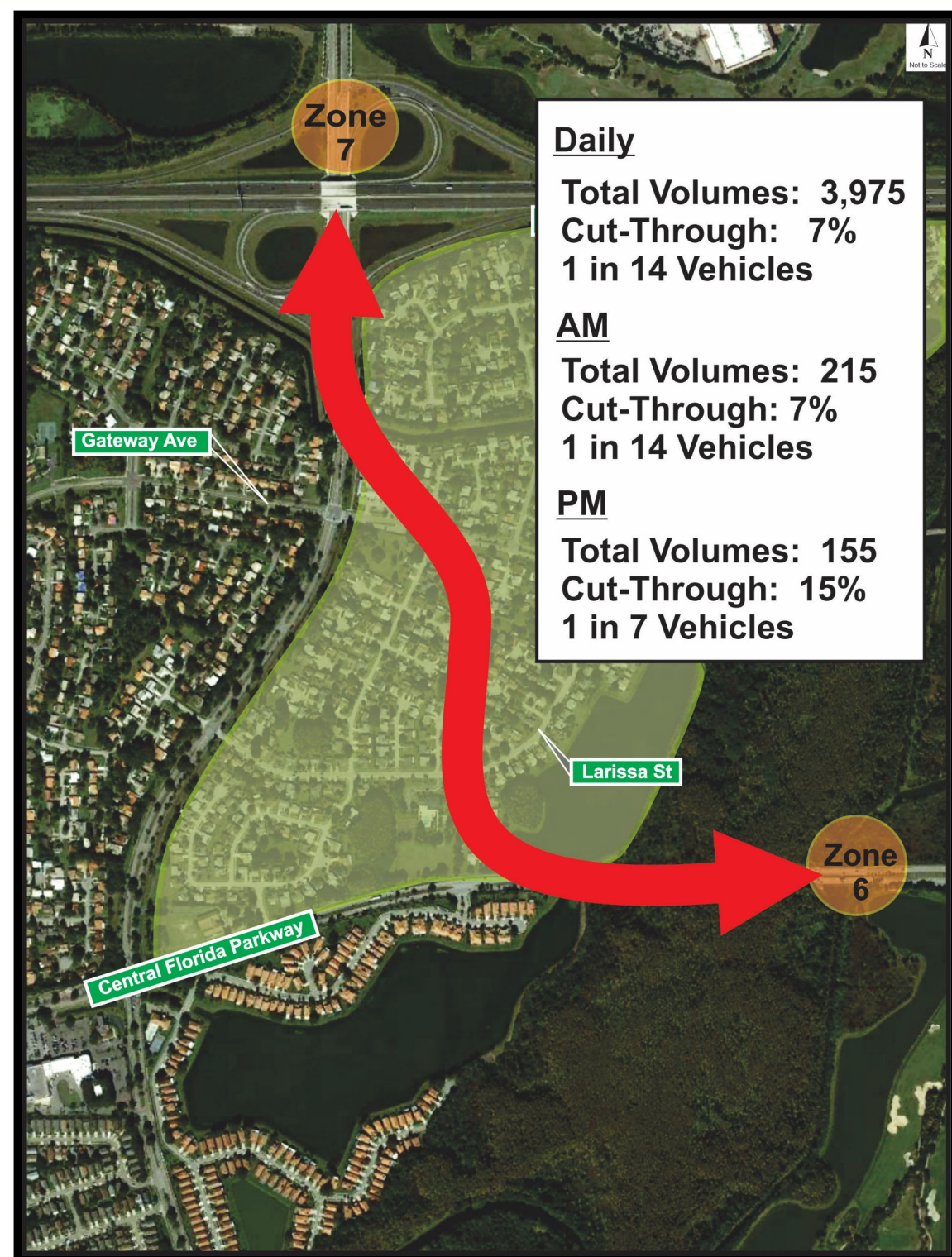
- 1 in 8 Vehicles cut-through per day
- 1 in 6 Vehicles cut-through during morning peak
- 1 in 5 Vehicles cut-through during evening peak

North to West

- 1 in 12 Vehicles cut-through per day
- 1 in 12 Vehicles cut-through during morning peak
- 1 in 6 Vehicles cut-through during evening peak



Cut-Through Traffic Patterns



O-D Pair (North & East)

East to North

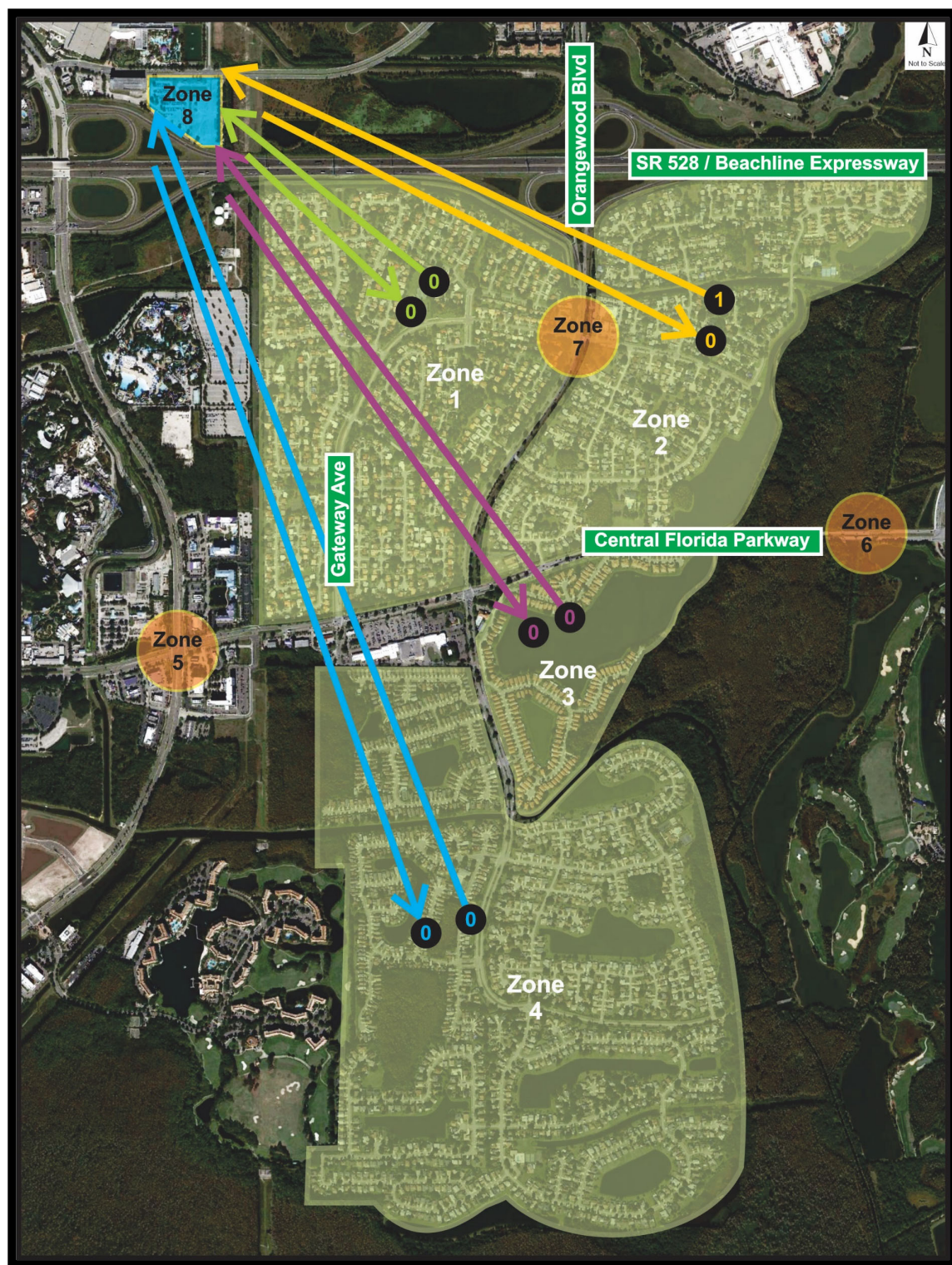
- 1 in 14 Vehicles cut-through per day
- 1 in 14 Vehicles cut-through during morning peak
- 1 in 7 Vehicles cut-through during evening peak

North to East

- Negligible cut-through traffic



Origin-Destination – Super Stop



- Minimal interaction between the Williamsburg area and the Super Stop



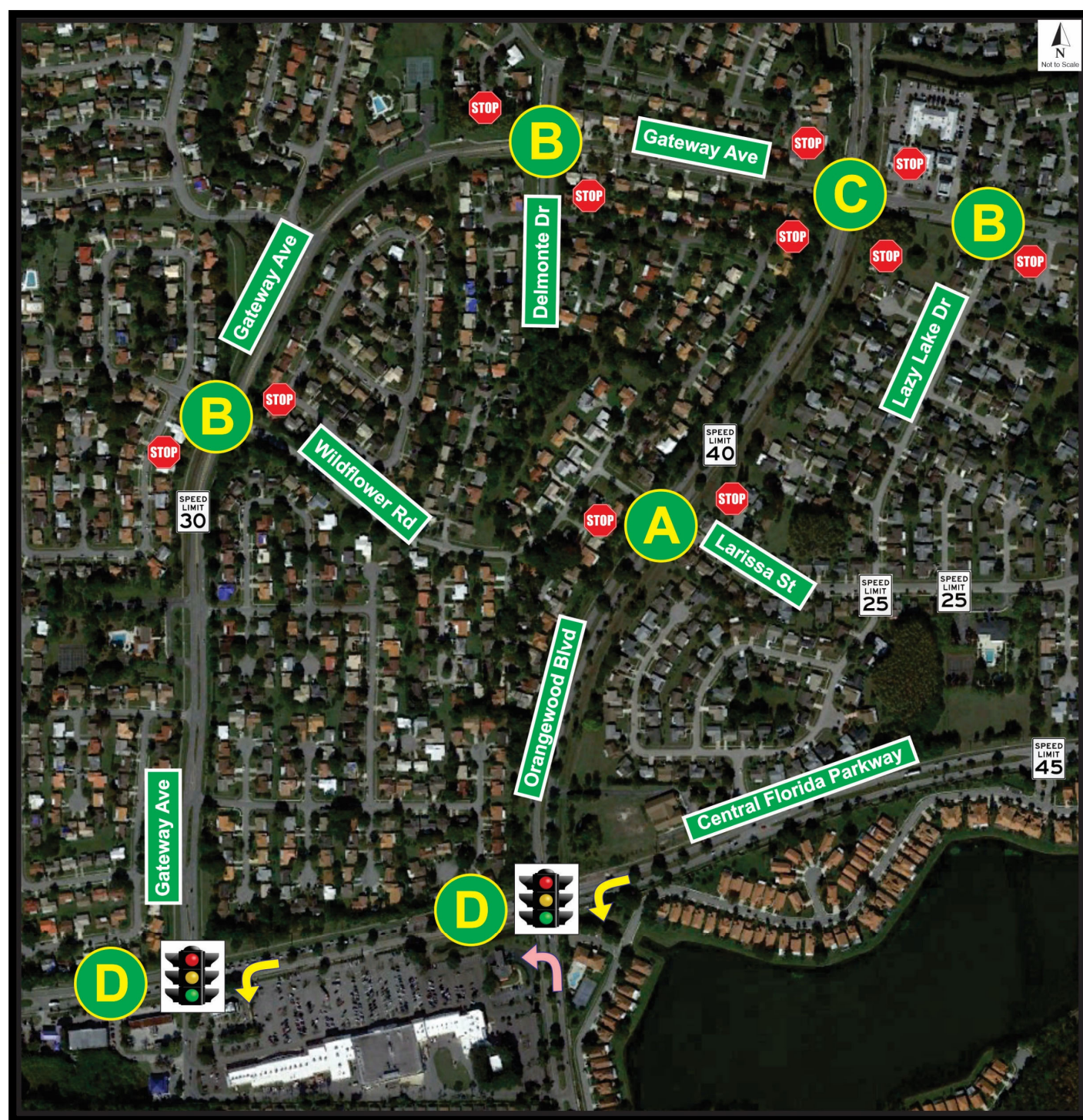
Network Operational Results - Roadways



Level of Service (LOS)	Condition
A	Free Flow
B	Nearly Free Flow
C	Stable Flow
D	Congestion
E	Approaching capacity
F	At capacity



Network Operational Results - Intersections



- All intersections operate at acceptable LOS
- Central Florida Pkwy & Oranewood Blvd
NB & WB Left Turn Movement Delays
- Central Florida Pkwy & Gateway Ave
WB Left Turn Movement Delay



Speed Study Results



Orangetown Boulevard

- Posted Speed Limit: **40 mph**
- Average Speed: 41 mph
- 85% Percentile Speed: 47 mph (**17.5% > posted limit**)
- 1% of vehicles exceed speed limit by 20 mph or more

Gateway Avenue

- Posted Speed Limit: **30 mph**
- Average Speed: 34 mph
- 85% Percentile Speed: 41 mph (**37% > posted limit**)
- 4% of vehicles exceed speed limit by 20 mph or more



Williamsburg Areawide Study Timeline





Williamsburg Areawide Study – Contact Information



Scott Nager, E.I.

Project Manager

Orange County Transportation Planning Division

4200 S. John Young Pkwy.

Orlando, FL 32839

(407) 836-8074

Ayman Saidi, P.E.

Consultant Project Manager

Traffic & Mobility Consultants

3101 Maguire Blvd., Suite 265

Orlando, FL 32803

(407) 531-5332 Ext. 209



Williamsburg Areawide Study – Website/Feedback



<https://www.ocfl.net/traffictransportation/transportationprojects/williamsburg.aspx>

The screenshot shows the Williamsburg Areawide Study page on the Orange County Government website. The page features a navigation bar with links to Site Map, A To Z Index, Español, Payment Center, OC Anywhere, and social media icons. A search bar and a 'Browse Services' button are also present. Below the navigation bar, there are tabs for RESIDENTS, VISITORS, BUSINESSES, EMPLOYEES, and ABOUT US. The main content area has a breadcrumb trail: 'You are here: Transportation Projects | Williamsburg'. A 'LINKS:' section on the left lists 'Transportation Projects' and 'Location Map'. The main heading is 'Williamsburg Areawide Study', accompanied by an image of a rolled-up map. Below this, a 'DESCRIPTION' section explains that Orange County has initiated an areawide traffic operational study in the Williamsburg area, bounded by South Florida Water Management District to the south, the Beachline Expressway (S.R. 528) to the north, the Wingate Village Club Utility Easement to the west, and Shingle Creek to the east. The study will include:

- Existing conditions analysis
 - Vehicular turning movement counts and speed data
 - Collecting crash data
 - Identifying origin/destination travel pattern
- Crash analysis and crash mapping
- Cut through traffic analysis
- Speed study
- Public Involvement
- Coordination Meetings

Visit the project web page

We want to know what you think!



Williamsburg Areawide Study



Questions & Discussion



All questions and answers will be posted on the website within 10 days of the meeting.